

Long Distance Portable Handheld Drone Detector with $\geq 2\text{km}$ Detection Distance and 6h Battery Life Using Spectrum Sensing Technology

Our Product Introduction

Basic Information

- Place of Origin: China
- Brand Name: MYT
- Certification: CNAS、CMA、CAL、ILAC-MRA
- Model Number: DR400-A
- Minimum Order Quantity: 1
- Price: Pricing is negotiable based on order quantity
- Packaging Details: L*W*H:(350mm*300mm*140mm)
- Delivery Time: 10 work days
- Payment Terms: TT,LC
- Supply Ability: 1000units per month



Product Specification

- Battery Life: 6h
- Detection Distance: $\geq 2\text{km}$
- Highlight: 6h Handheld Drone Detector,
Long Distance Handheld Drone Detector,
2km Handheld Drone Detector



More Images



for more products please visit us on chinaantidrone.com

Product Description

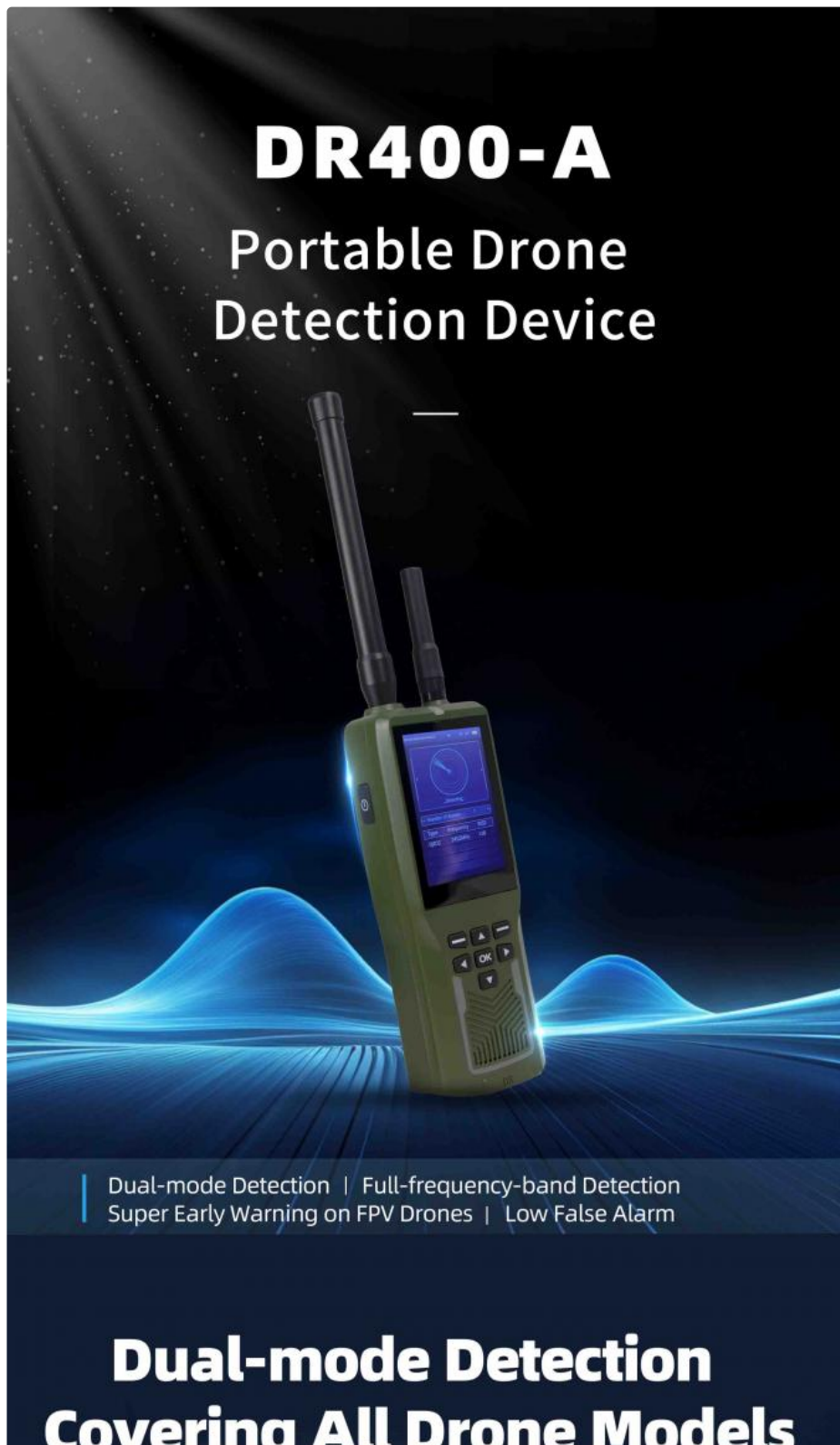
Long Distance Portable Handheld Drone Detector

Portable long-range drone detection device with battery life exceeding 6 hours and detection range of 2km or more.

Device Overview

This handheld drone detection device integrates advanced spectrum sensing technology to effectively detect and identify various types of drones. Utilizing self-developed low-power ultra-wideband digital receiving technology, sophisticated signal detection algorithms, and advanced drone identification algorithms combined with an efficient ultra-wideband antenna, the system achieves extremely low false alarm rates even in complex electromagnetic environments.

The device accurately identifies quadcopters, fixed-wing aircraft, DIY drones, FPV drones, and other unmanned aerial vehicles, providing audible, visual, and vibration alerts upon detection.

A handheld drone detection device, model DR400-A, is shown against a dark, futuristic background with blue light waves. The device is olive green with a black screen displaying a radar-like interface. It has two antennas on top and a speaker at the bottom. The text 'DR400-A' and 'Portable Drone Detection Device' is prominently displayed above the device. Below the device, a list of features is shown: 'Dual-mode Detection | Full-frequency-band Detection', 'Super Early Warning on FPV Drones | Low False Alarm'. At the bottom, the text 'Dual-mode Detection' and 'Covering All Drone Models' is displayed in large, bold letters.

DR400-A

Portable Drone Detection Device

- Dual-mode Detection | Full-frequency-band Detection
- Super Early Warning on FPV Drones | Low False Alarm

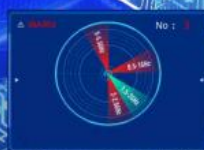
Dual-mode Detection

Covering All Drone Models

Switch between two detection modes,
accurately identify mainstream commercial drones
and PFV, DIY drones, etc.



Early Warning Mode: Spectrum Power Detection

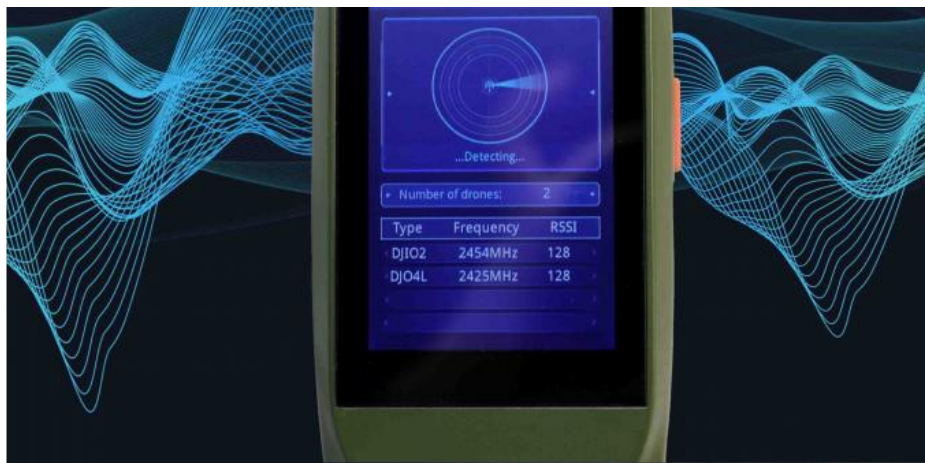


Alarm Mode: Spectrum Feature Matching Detection

70MHz-6.2GHz Full-frequency-band Customized Scanning and Detection

8-12 Key Detection Frequency Bands
Not Actively Sending Electromagnetic Signals





Super Early Warning on FPV Drones

Unique baseband signal analysis and identification technology quickly give warning information of various types of quad-rotor, fixed-wing, DIY, FPV and other drones.



Extremely Low False Alarm

Extremely Low False Alarm

Spectrum signal detection significantly reduces the false alarm rate and ensures an extremely low false alarm rate even in complex electromagnetic environments.

3 Alarm Modes:

Sound

Vibration

Light



Product Details



Product Parameters

Identified Drone Types	Mainstream drones and most FPV, DIY drones, etc.
Detection Frequency Bands	Supports customized scanning of 70MHz-6.2GHz (400MHz,800MHz,900MHz,1.2GHz,1.4GHz,2.4GHz, 5.2GHz,5.8GHz.supports customization)
Detection Radius	≥1.5km (Good views and electromagnetic environment)
Detection Response Time	≤3s (8 frequency bands);≤5s (12 frequency bands)
Detection Principle	Spectrum feature identification, Spectrum power identification
Alarm Mode	Sound, vibration, light
Power	Removable Lithium Battery
Battery Life	≥6h
Screen Size	3.5 inches
Device Size	199mm*75mm*40mm (Antenna not included)
Working Temperature	-20°C~+50°C
Supported Languages	Chinese,English, Russian (Supports multi-language customization)

*Product pictures are for reference only, please refer to the actual product.





Detection Capabilities

The device detects video transmission signals emitted by drones in the 5700MHz-5800MHz frequency range, which represents standard VT signal bands. Detection verification requires placing both the handheld detection device and remote controller within the same video transmission

range.

Key Features

- Dual-mode detection:** Switch between spectrum power detection mode and spectrum characteristic matching detection mode
- Wide detection range:** Accurately identifies drones from mainstream brands including DJI, Autel, and Hubsan, plus most FPV and DIY drones
- Comprehensive frequency coverage:** Full coverage of 70MHz-6.2GHz with 8-12 key detection frequency bands
- FPV early warning:** Unique baseband signal analysis and identification technology for rapid detection of DIY and FPV drones
- Low false alarm rate:** Advanced spectrum signal detection minimizes false alarms in complex electromagnetic environments

Technical Specifications

Parameter	Details
Identification Type	Most mainstream brand drones and FPV drones
Detection Frequency	Supports 400MHz-6GHz customized scanning, default bands: 400MHz, 800MHz, 900MHz, 1.2GHz, 1.4GHz, 2.4GHz, 5.2GHz, 5.8GHz
Detection Range	≥2KM
Detection Response Time	≤3S
Detection Principle	Spectrum feature identification
Alarm Method	Audio, vibration, light
Intercom Distance	3KM (open and unobstructed)
Battery Life	Main device ≥8 hours, auxiliary device ≥12 hours
Working Temperature	-20°C to +50°C



Display Information

Display Content	Description
-----------------	-------------

Detection Status	Shows that the device is in detection status
Signal Type	Detection signal type
Red Light Alarm	Icon displayed when red light alarm function is enabled
Signal Frequency	Detection signal frequency
Frequency Sweep	Icon displayed when frequency sweep function is enabled
Signal Strength	Detection signal strength
Vibration Alarm	Icon displayed when vibration alarm function is enabled
Sound Alarm	Icon displayed when sound alarm function is enabled
Battery Power	Battery power display
Target Count	Indicates the number of targets detected by the device





Frequently Asked Questions

How far is the detection range?

Under normal conditions, the detection range is two kilometers, though monitoring distance may vary depending on the radio environment.

Can the alarm for detecting a drone be communicated to other team members?

Yes, detection alarms can be simultaneously conveyed to other team members through the equipped communication devices.

Does the device locate the position of the drone?

Yes, the device can locate the position of detected drones, which will be displayed on the device screen.

Can the product be customized?

Yes, we offer customization options including logo, size, color, and functional modifications.



Chongqing Miao Yi Tang Technology Co., Ltd.



+8613101235550



gary@chinaantidrone.com



chinaantidrone.com

www.chinaantidrone.com